

FEATURE CORE INNOVATION AREA (CIA) TEAM PRESENTATION:

CIA TEAM

SAFETY

NJDOT – Dan LiSanti
FHWA – Keith Skilton

Presented by:

Elise Bremer-Nei

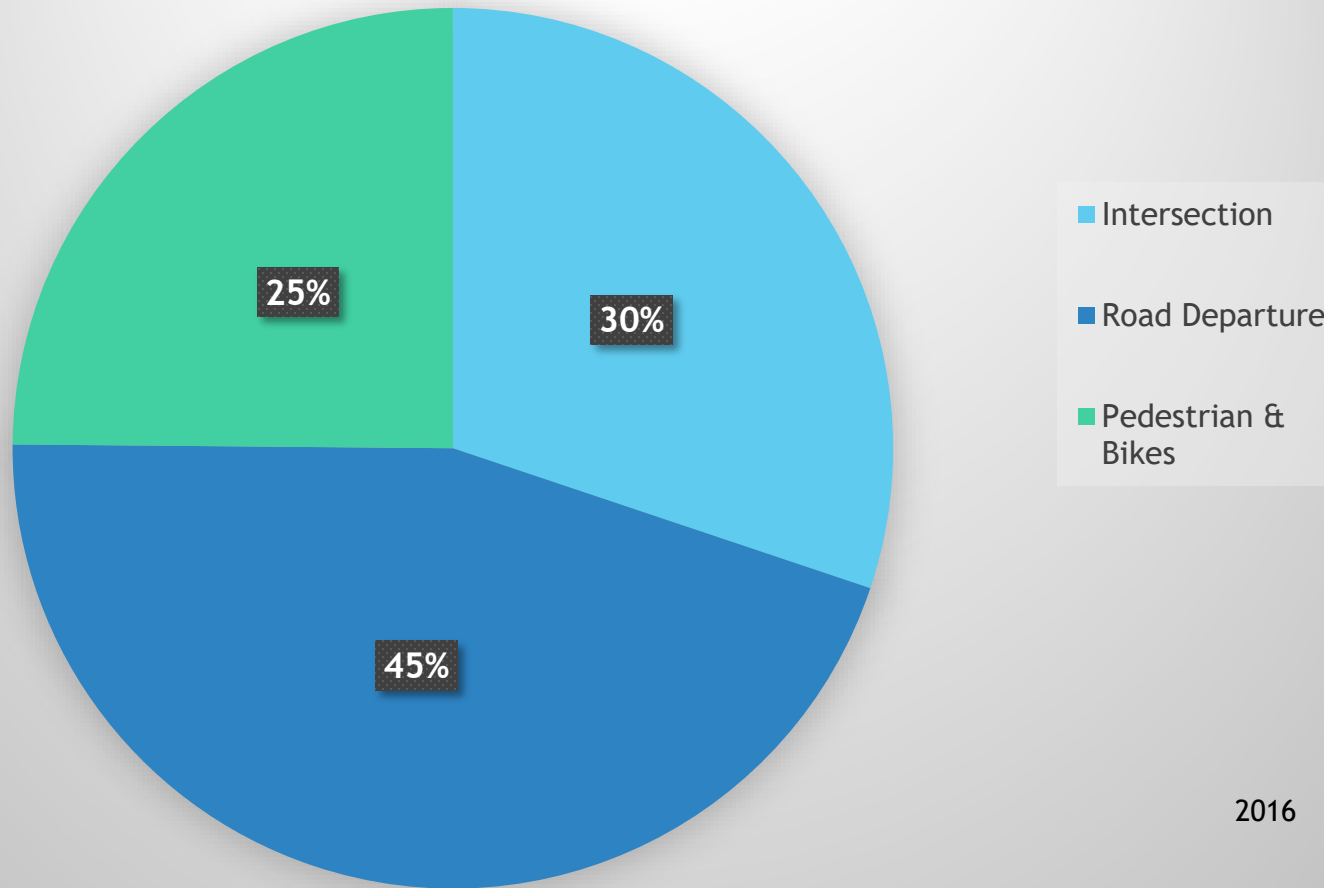
NJDOT Bureau of Safety,
Pedestrian & Bicycle
Programs



New Jersey State Transportation Innovation Council

ROAD DIETS

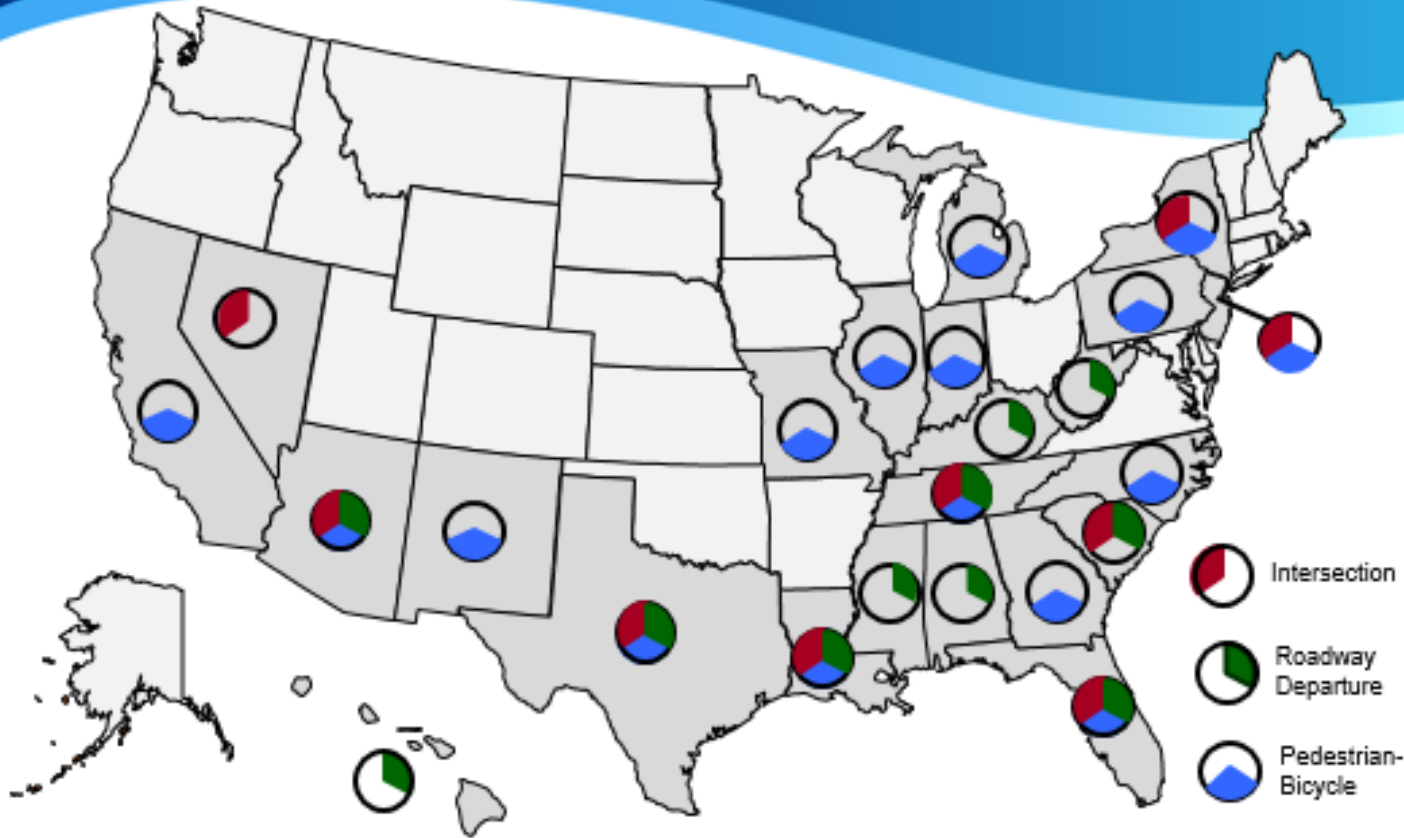
New Jersey's Fatalities and Serious Injuries



2016

Intersection and Pedestrian Focus State

2015 Focus States



**NJ's % of
Pedestrian
Fatalities is
2X National
Average**

FHWA's Proven Safety Countermeasures

Intersection

- Left- and Right-Turn Lanes at Two-Stop Controlled Intersections
- Backplates with Retroreflective Borders
- Corridor Access Management
- Yellow Change Interval
- Roundabouts
- Systemic Application of Multiple Low Cost Countermeasures at Stop-Controlled Intersections*
- Reduced Left-Turn Conflict Intersections*

Roadway Departure

- Longitudinal Rumble Strips and Stripes along Two-Lane Highways
- Median Barrier
- SafetyEdgeSM
- Enhanced Delineation and Friction for Horizontal Curves
- Roadside Design Improvements at Curves*

Pedestrian

- Medians and Pedestrian Crossing Islands in Urban and Suburban Areas
- Pedestrian Hybrid Beacon
- **Road Diet**
- Walkways
- Leading Pedestrian Intervals*

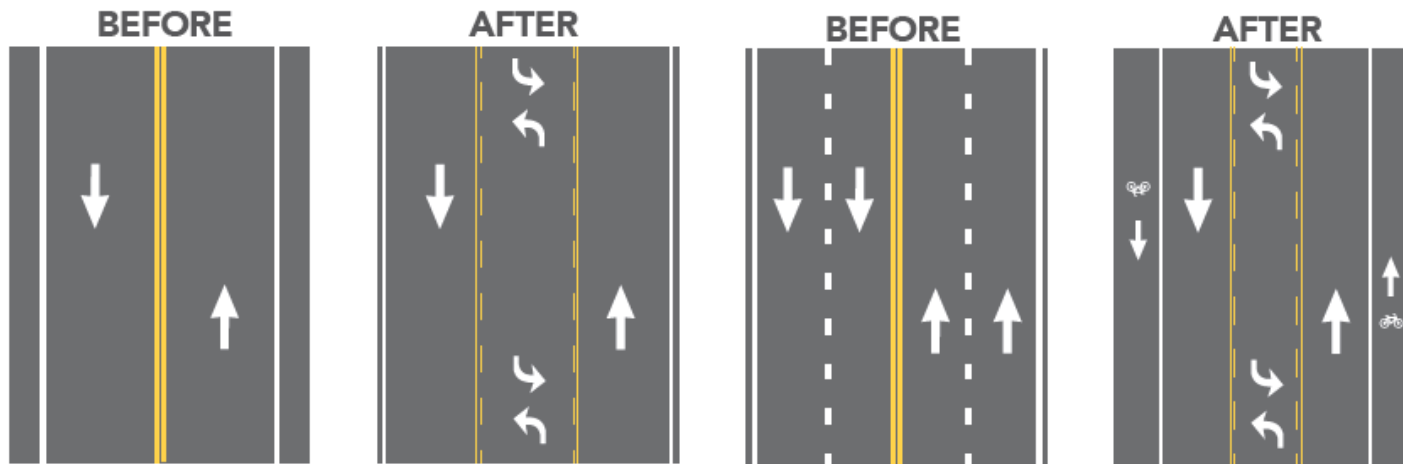
Crosscutting Strategies

- Road Safety Audits
- Local Road Safety Plans*
- US Limits*

* new countermeasures or strategies introduced this year

What is a Road Diet?

- ▶ A transportation planning technique that repositions pavement lines to improve safety and add space for other modes.
- ▶ Road Diets reduce lanes to allow room for bike lanes, two-way left-turn lanes, parking, curb extensions, etc.



Road Diets

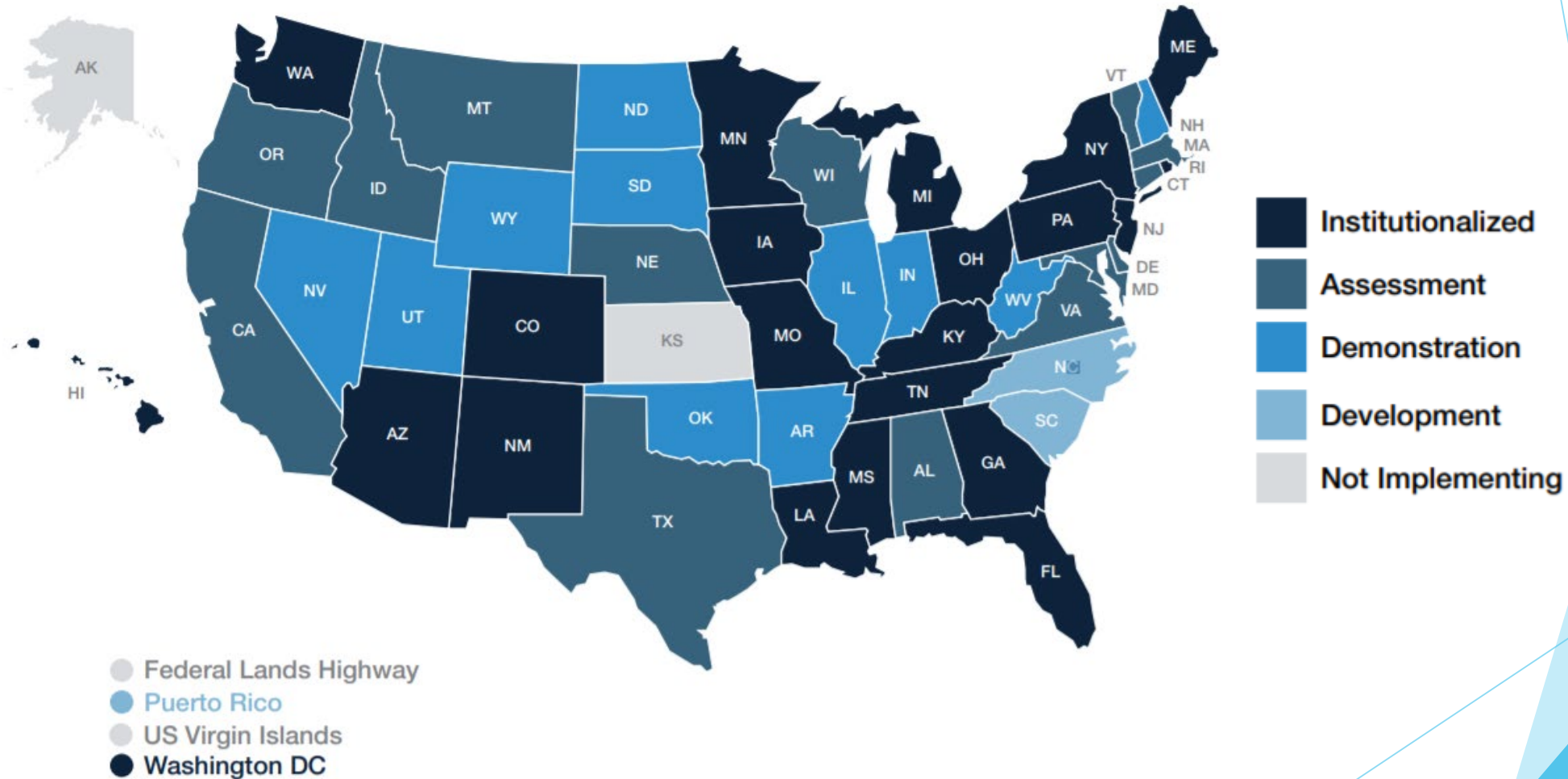


SAFETY BENEFIT:

**4-Lane → 3-Lane
Road Diet Conversions
19-47%
Reduction in total crashes**

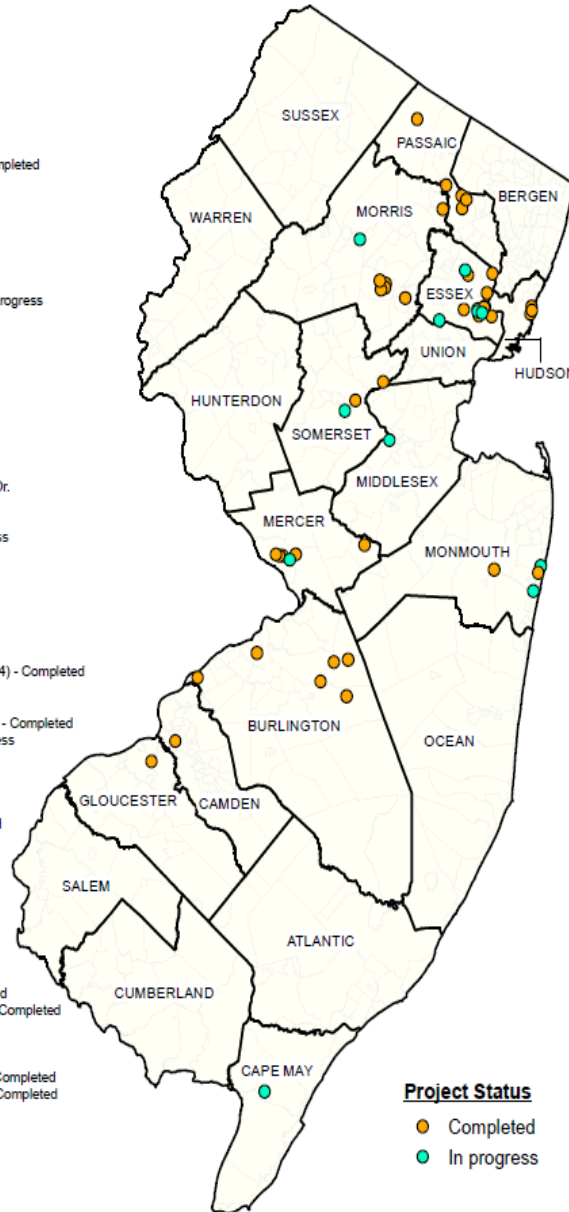
Source: *Evaluation of Lane Reduction "Road Diet" Measures on Crashes*,
FHWA-HRT-10-053.

EDC-3 Road Diet Implementation (Dec 2016)



Road Diet Locations in New Jersey Since 2011

1. Mt Holly Rd: Fountain Ave. to Garnet Dr. - Completed
2. Wrightstown-Cockstown Rd: Keller Ave. to McGuire Blvd - Completed
3. Broad St: Delaware St. to Union Landing Rd. Completed
4. Fort Dix Rd: Rt. 630 to Fort Dix - Completed
5. Lakehurst Rd: Broadway/Pemberton Rd (CR 667) to Trenton Rd. (CR 545) - Completed
6. Fort Dix St: Wrightstown Rd. to Augusta St. - Completed
7. US 130: Wood St. to Jacksonville Rd. (CR 670) - Completed
8. Black Horse Pike: I-295 to Merchant St. - Completed
9. Dennisville Rd: Delsea Dr. (NJ 47) to Cape May Railroad - In progress
10. South Park St: Bloomfield Ave. to Church St. - Completed
11. South Orange Ave: Stuyvesant Ave. to Poe Ave. - Completed
12. Irvine Turner Blvd., Jones St. and Norfolk St: Clinton Ave. to West Market St. - Completed
13. Mt. Prospect Ave: Heller Pkwy to Tiffany Blvd. - Completed
14. Broadway: Bloomfield Pl. to Broad St. - Completed
15. Raymond Blvd: Freeman St. to Van Buren St. - Completed
16. West Market St: Bergen St. to Central Ave. - Completed
17. Satterthwaite Ave: Nutley Ave. to North Ave. - Completed
18. Dr. MLK Jr. Blvd: State St. to Crane St. - Completed
19. Essex St., Millburn Ave, Main St., Lackawanna Pt: Parkview Dr. to Douglass St. - In progress
20. NJ 71: Mill St. (CR 872) to Park Ave. (CR 646) - In progress
21. Bergen St: West Market St. to South Orange Ave. - In progress
22. Dr. MLK Jr. Blvd: Clinton Ave. to Orange St. - In progress
23. NJ 23: Bloomfield Ave. Bridge over NJ Transit - In progress
24. Broad St: Carpenter St. to Red Bank Ave. - Completed
25. Willow Ave: 11th St. to 13th St. - Completed
26. Observer Hwy: Henderson St. to Hudson St. - Completed
27. Washington St: Observer Hwy. to 15th St. - Completed
28. Parkside Ave: Olden Ave to Spruce Street - Completed
29. Olden Ave: Pennington Road (NJ 31) to Parkway Ave. (CR 634) - Completed
30. Park Ave: Hutchinson St. to Greeley St. - Completed
31. US 1 Business: Brunswick Circle to Lake Dr. - Completed
32. Parkway Ave: Scoot Rd. (CR 611) to Parkside Ave (CR 636) - Completed
33. Princeton Ave: Brunswick Circle Ext. to Olden Ave. - In progress
34. Livingston Ave: New St. to Nassau St. - In progress
35. Tinton Falls Rd: State Rt. 34 to Asbury Ave. - Completed
36. NJ 71: Main St. to Cedar Ave. - In progress
37. NJ 35: L St. to NJ 71/8th Ave. - In progress
38. Memorial Dr: Monroe Ave. to Corlies Ave (NJ 33) - Completed
39. Ridgedale Ave: Central Ave. to Burnet Rd. - Completed
40. Lafayette Ave: Elm St., Martin Luther King Ave., James St: Spring St. to Jersey Ave. - In progress
41. Lafayette Ave: Ridgedale Ave. to Morris St. - Completed
42. Franklin St: Madison Ave. to Elm St. - Completed
43. James St: South St. to Cottonwood Rd. - Completed
44. West Franklin Ave: Lincoln Park Rd. to Blvd. - Completed
45. US 46: Pequannock St. to W Main St. (CR 513) - In progress
46. US 202: Sussex Ave. to Max Pl. - Completed
47. Hamburg Turnpike: Terhune Dr. to Ringwood Ave. - Completed
48. Berdan Ave: Passaic County 681 to North county boundary - Completed
49. Ratzler Rd: Baldwin Terrace to Alps Rd. - Completed
50. Valley Rd: Urban Club Rd. to Berdan Ave. - Completed
51. Union Valley Rd: Vista Rd to Bearford Rd. - Completed
52. Promenade Blvd: Main St. (CR 533) to Union Ave. (NJ 28) - Completed
53. Washington Ave: U.S. Rt. 22 to County border to the south - Completed
54. Main St: Dukes Pkwy. to Kennedy Blvd. - In progress



Project Status
● Completed
● In progress

Video - Implementing Road Diets In New Jersey

- Provide understanding of how road diets work and how they improve safety
- Show case studies of implemented projects that provide community safety, economic development, tourism benefits
- Use case study peers to address myths and community concerns
- Provide resources for communities to consider road diets

Thank You

Elise Bremer-Nei, AICP/PP
NJ Bicycle and Pedestrian Coordinator
NJDOT Bureau of Safety, Pedestrian & Bicycle Programs
Elise.Bremer-Nei@dot.nj.gov
(609) 530-2765

